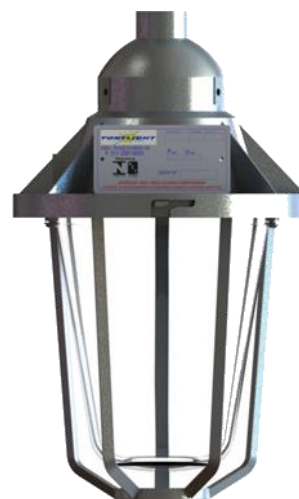


Características:

DESCRIÇÃO

Luminária industrial IP65 para uso em áreas externas, corpo, grade e acessórios em alumínio fundido de alta resistência mecânica e a corrosão, vidro alcalino, acabamento em pintura eletrostática na cor cinza claro Munsell N6,5, grau de proteção IP65.

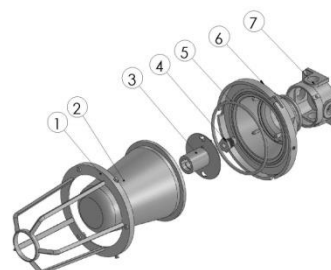
Conjuntos para lâmpadas conforme tabelas.







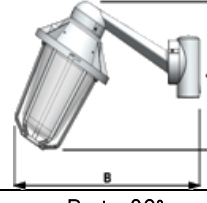
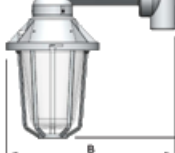
Acabamento:

Pintura eletrostática na cor cinza texturizada.
A pedido pode ser fornecido com refletor.

1. Grade
2. Vidro Borocilicato
3. Porta Lâmpada
4. Peça Cabo
5. Anel de vedação
6. Corpo
7. Entrada 3/4



Características técnicas:

Desenho	Código	Porta Lâmpada	Lâmpada				Dimensões mm			Refletor Opcional
			Incand	Mista	FC	LED	A	B	ØJ	
 <p>Pendente</p>	FLY100/2	E-27	60/200w	160w	15/32w	12/18w	275	230	¾"	FLOY 226
	FLY100/3	E-40	300w	250w	45/65w	40w	340	290	¾"	FLOY 230
 <p>Plafonier</p>	FLY105/2	E-27	60/200w	160w	15/32w	12/18w	295	230	¾"	FLOY 226
	FLY105/3	E-40	300w	250w	45/65w	40w	380	290	¾"	FLOY 230
 <p>Arandela 30</p>	FLY106/2	E-27	60/200w	160w	15/32w	12/18w	285	400	¾"	FLOY 226
	FLY106/3	E-40	300w	250w	45/65w	40w	360	465	¾"	FLOY 230
 <p>Arandela 90°</p>	FLY107/2	E-27	60/200w	160w	15/32w	12/18w	310	370	¾"	FLOY 226
	FLY107/3	E-40	300w	250w	45/65w	40w	395	395	¾"	FLOY 230
 <p>Poste 30°</p>	FLY105/2P	E-27	60/200w	160w	15/32w	12/18w	320	485	¾"	FLOY 226
	FLY105/3P	E-40	300w	250w	45/65w	40w	375	605	¾"	FLOY 230
 <p>Poste 90°</p>	FLY106/2P	E-27	60/200w	160w	15/32w	12/18w	355	485	¾"	FLOY 226
	FLY106/3P	E-40	300w	250w	45/65w	40w	415	540	¾"	FLOY 230